

An outline map of Alaska in a light brown color, serving as a background for the title and presenter information.

# Tuberculosis Surveillance in Alaska

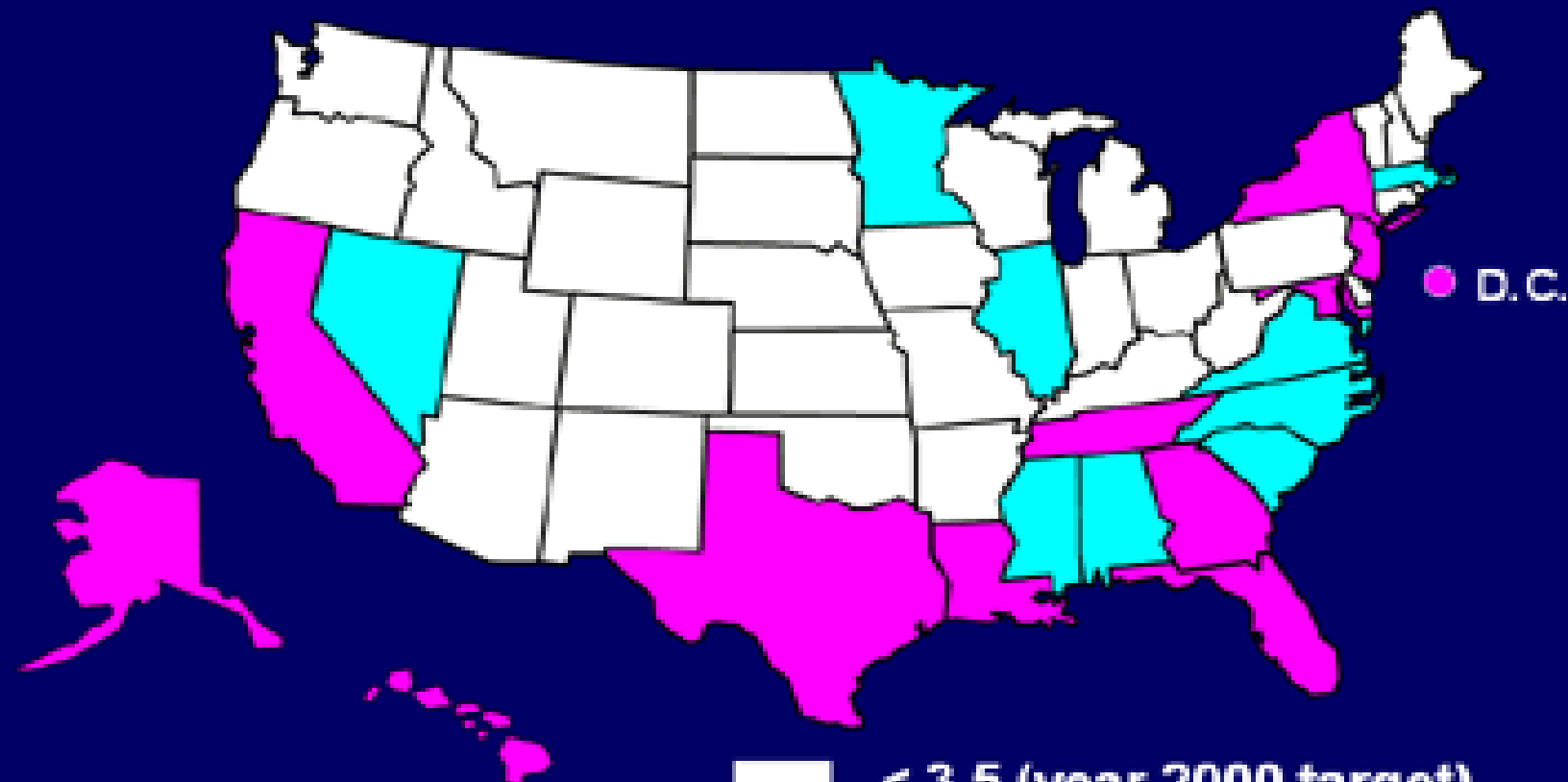
**Presented by  
Tammy Zulz, MPH  
Centers for Disease Control & Prevention  
Arctic Investigations Program**



**Karen Martinek, RN, MPH**  
Alaska DHSS  
Division of Public Health  
Section of Epidemiology

# The “Outside” View of Alaska

## TB Case Rates,\* United States, 2008



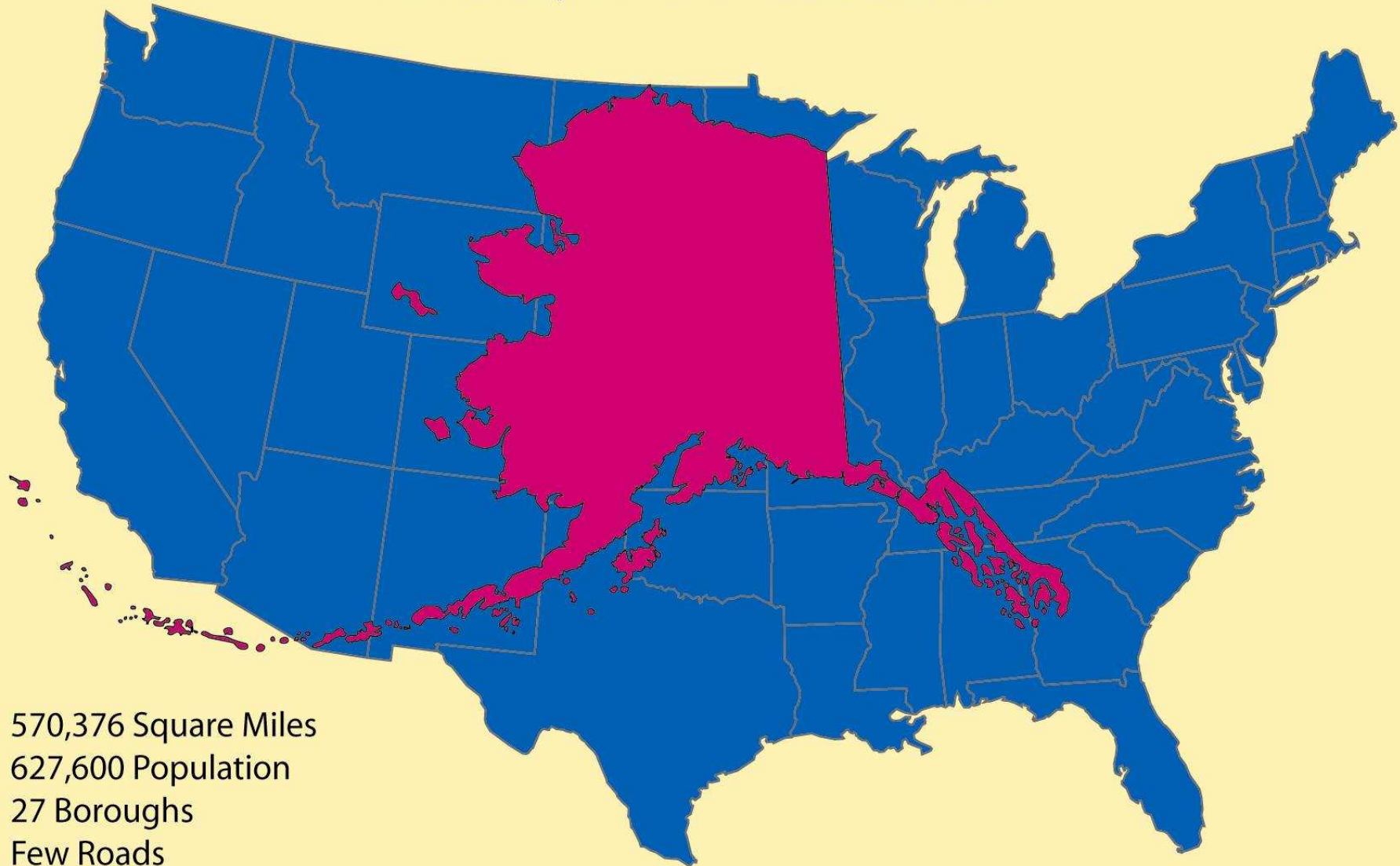
- White: ≤ 3.5 (year 2000 target)
- Yellow: 3.6–4.2
- Red: > 4.2 (national average)



\*Cases per 100,000.



# Alaska, The Great Land



570,376 Square Miles

627,600 Population

27 Boroughs

Few Roads



# Alaska Reporting Regulations

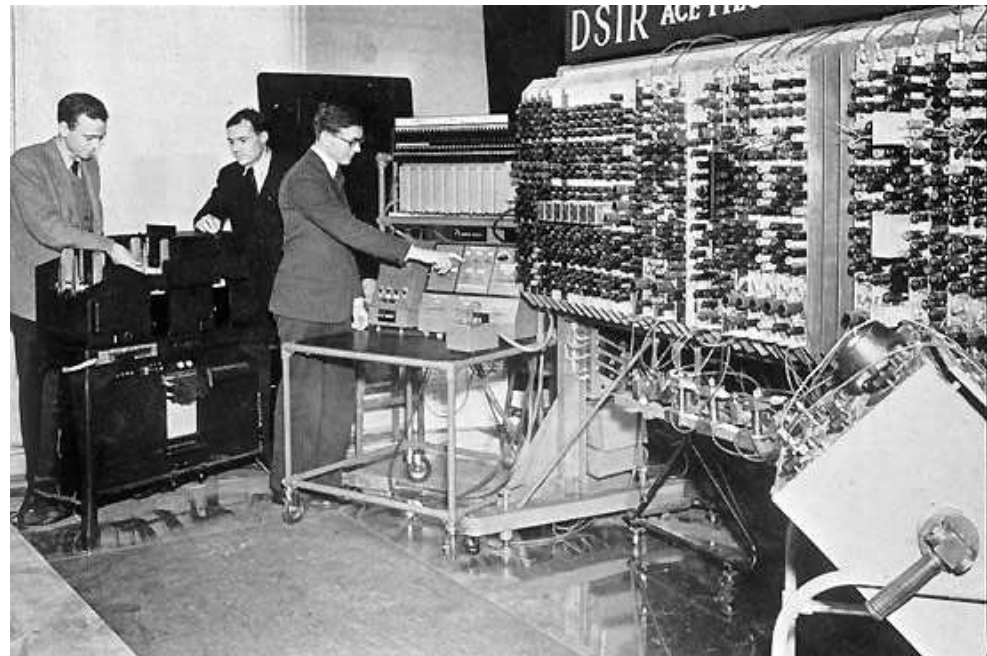
- TB one of many reportable infectious diseases
- Report suspected or confirmed cases within 5 days
- Rapid Telephonic Reporting System
- Phone, Fax, Mail
- Electronic Lab Reporting
- Health care providers and labs must report

# TB Surveillance Components

- Cases/Suspects
- Persons with latent TB infection (LTBI)
- Contacts to Cases
- Treatment completion for cases and LTBI
- School Screening

# Electronic Lab Reporting

- 26 hospitals (3 major)
- Currently
  - 5 currently on line,  
including 2 major
- In works
  - 3 private labs
  - 1 major hospital



New TB Case

Reported to Alaska TB Program by  
Health care worker or Lab

Hard Copy of Data  
Nursing Staff

Data Entered into Database  
by Clerical Staff

Unnamed Data Received by  
CDC

Data Analyzed by TB Program

US Public

AK Public



# State Public Health Laboratory Capacity

- ▣ Trained laboratorians
- ▣ Smear (fluorochrome stain)
- ▣ Culture (MGIT, 7H10 bi-plates)
- ▣ Genprobe and HPLC
- ▣ Susceptibility testing
- ▣ Genotyping of all isolates  
at reference lab in California



# Tuberculosis in Alaska

## 2010 Annual Report



**State of Alaska**

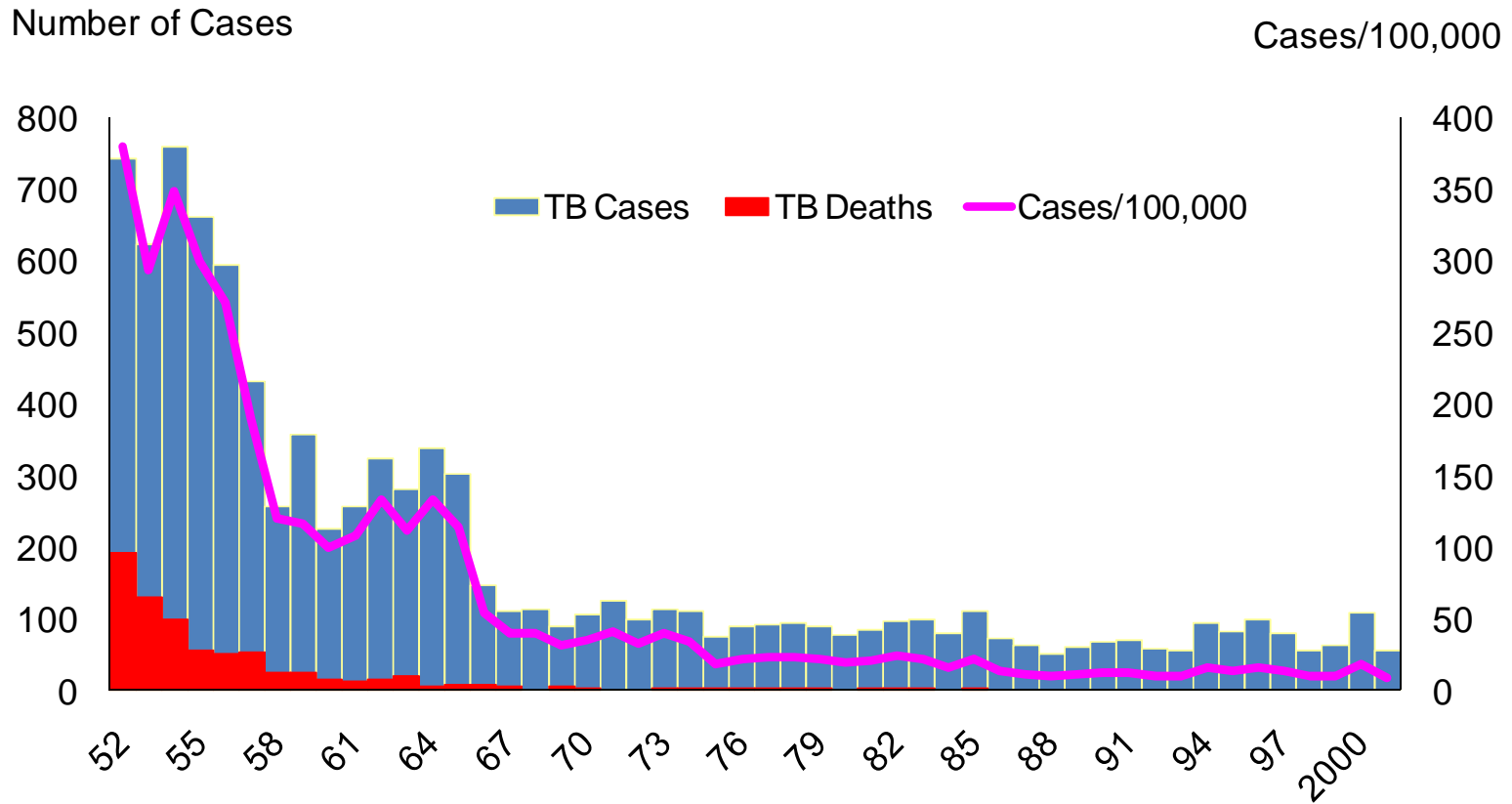
Department of Health and Social Services

Division of Public Health

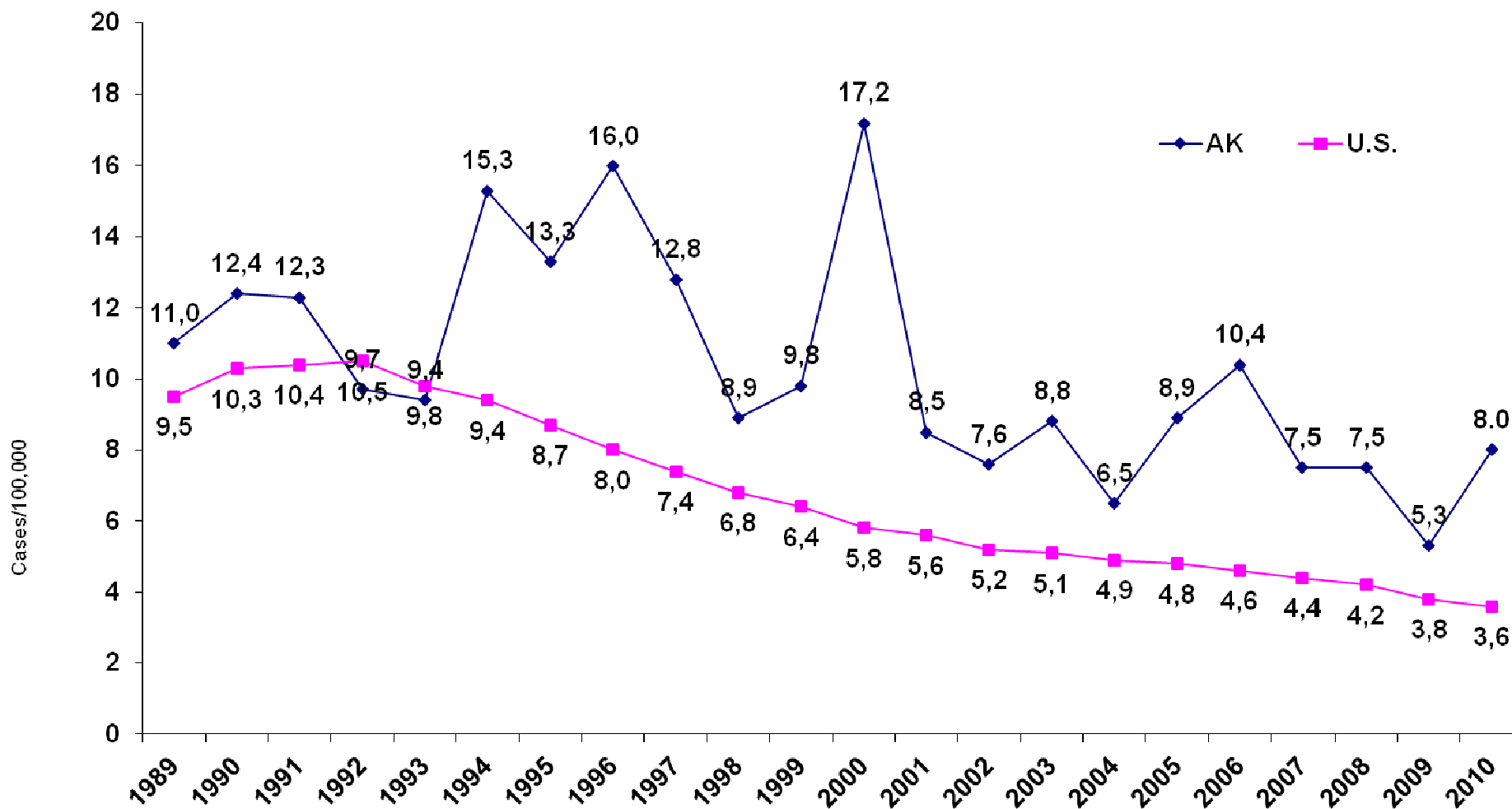
Section of Epidemiology

<http://www.epi.alaska.gov/pubs/webtb/TBReport2009.pdf>

# TB in Alaska: 50 years of experience



# TB in Alaska 1989 - 2010

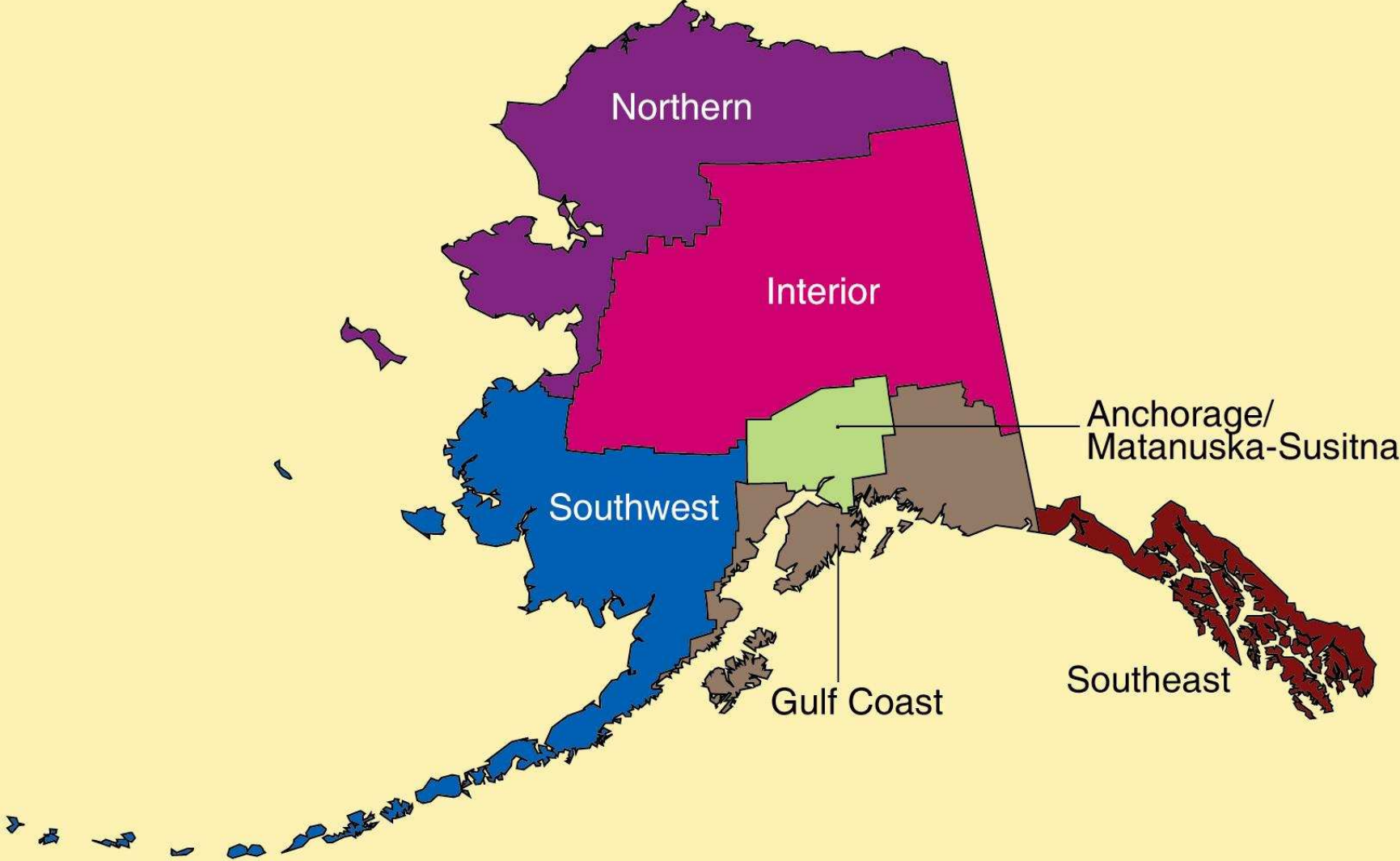


### States with the highest incidence of tuberculosis in 2010<sup>[1]</sup>

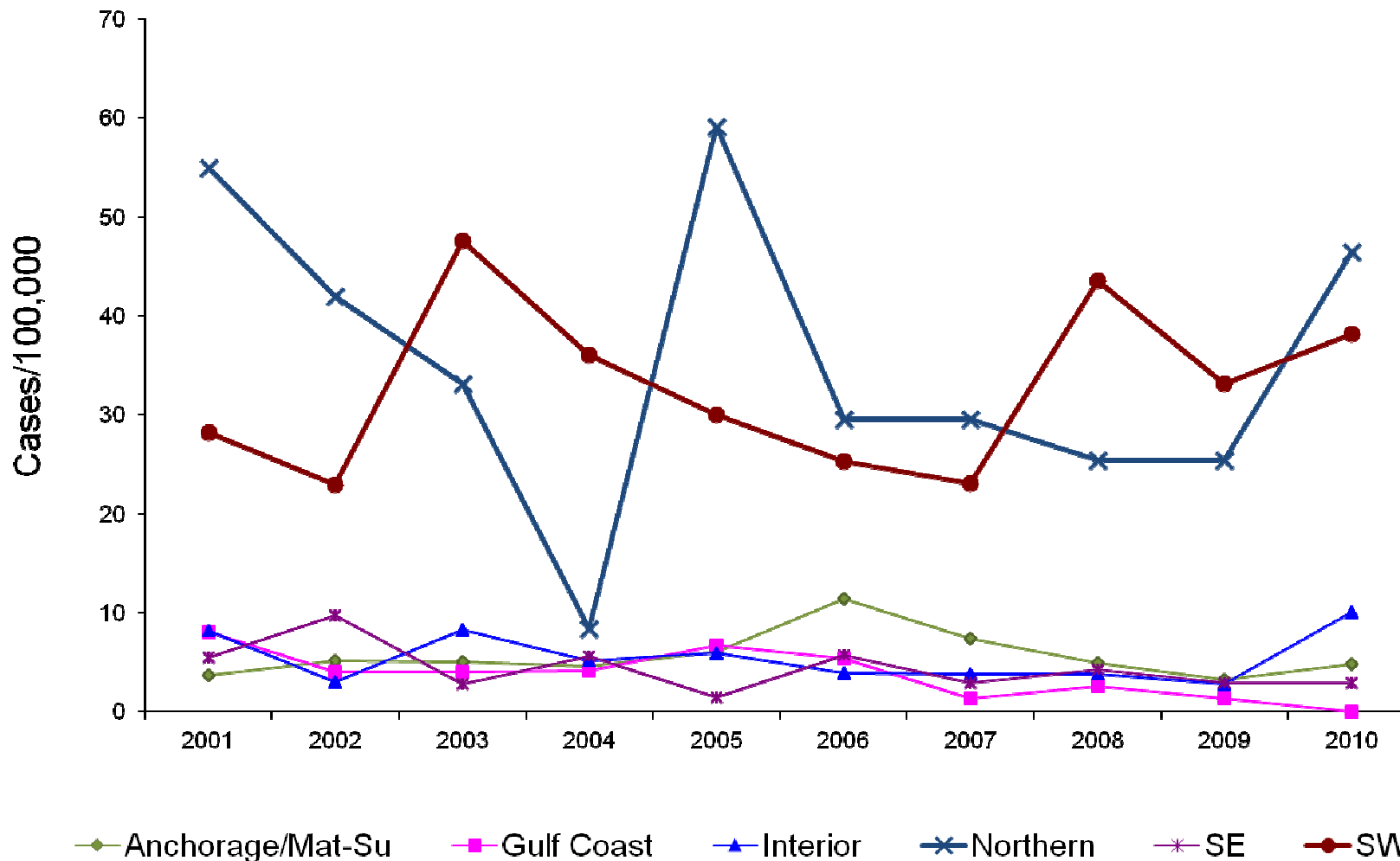
<b>State or District</b>	<b>Number Cases</b>	<b>Incidence of TB</b>	<b>Population</b>
Hawaii	114	8.8	1,300,086
Alaska	57	8.0	708,862
District of Columbia	44	7.2	610,589
California	2,328	6.2	37,266,600
Texas	1,385	5.5	25,213,445

<sup>[1]</sup> Centers for Disease Control and Prevention. Division of Tuberculosis Elimination; preliminary data.

# The Six Labor Market Regions of Alaska

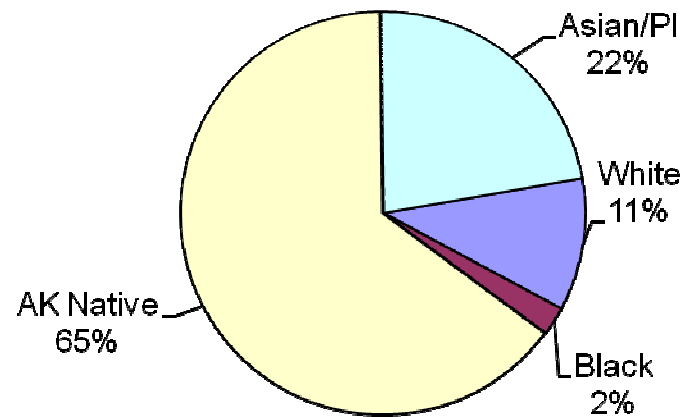


# Incidence of TB in Alaska by Region

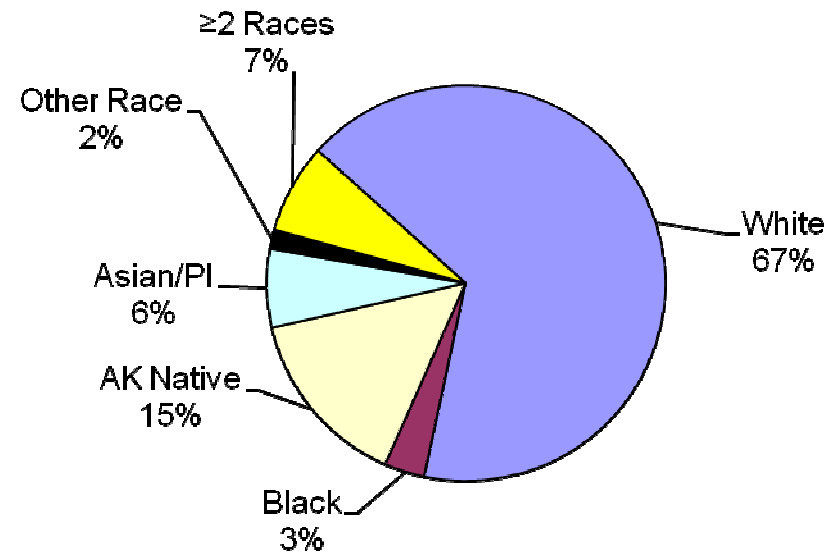


# Racial Demographics TB in Alaska from 2001-2010 compared to Alaska 2010 Census Data

**Alaska TB Cases**  
N=601

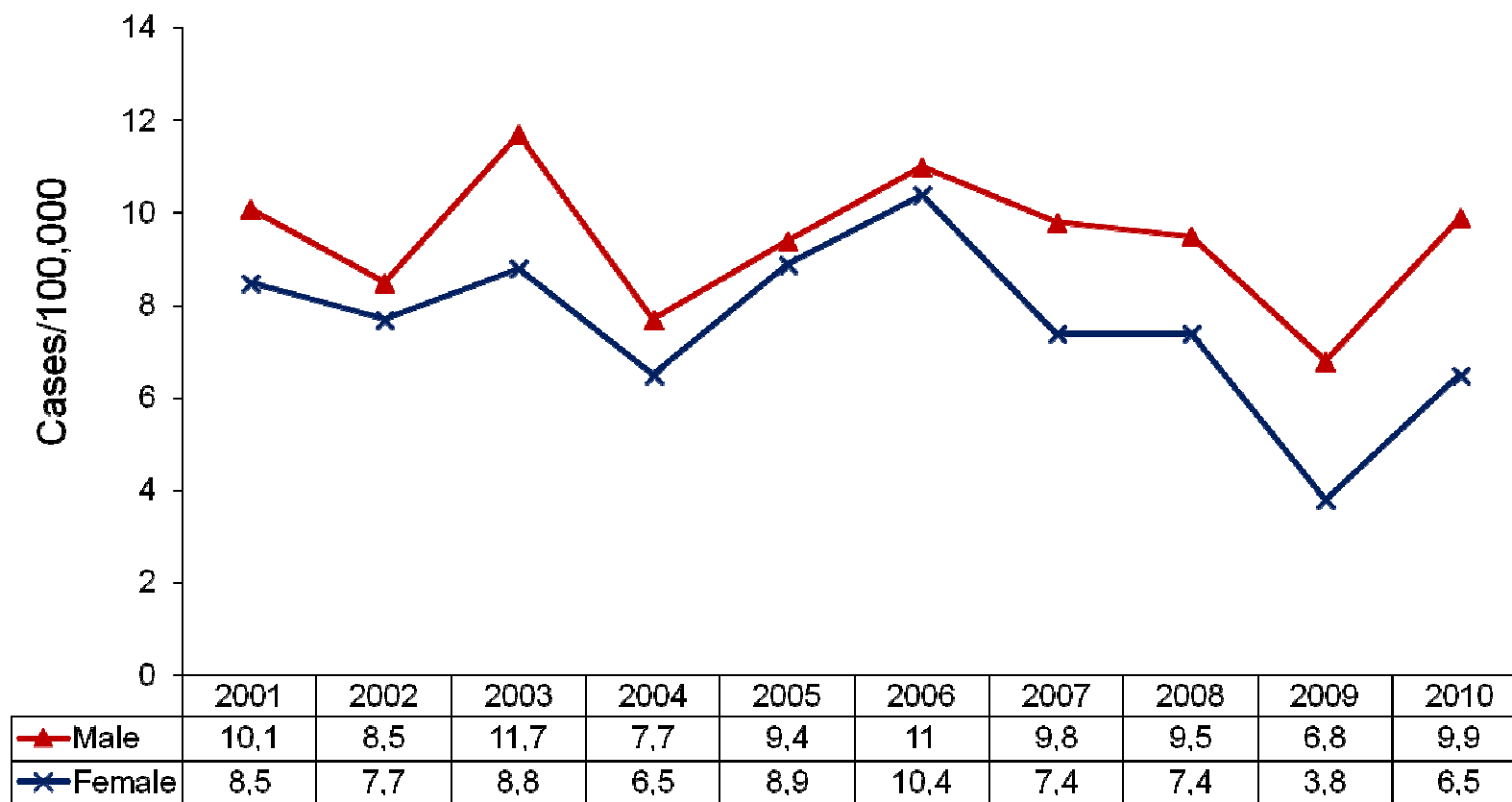


**All Alaska Residents**  
N=710,231

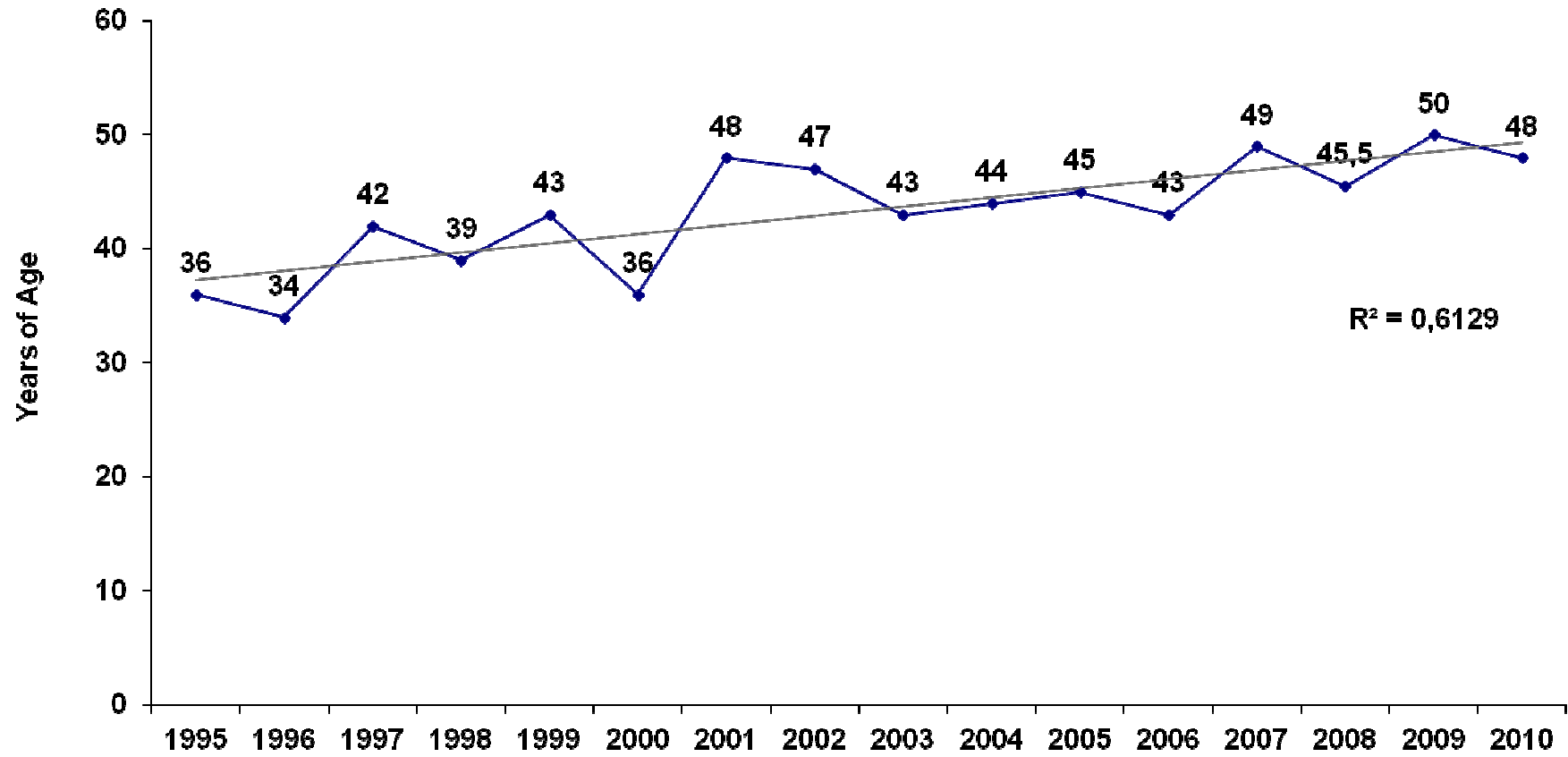




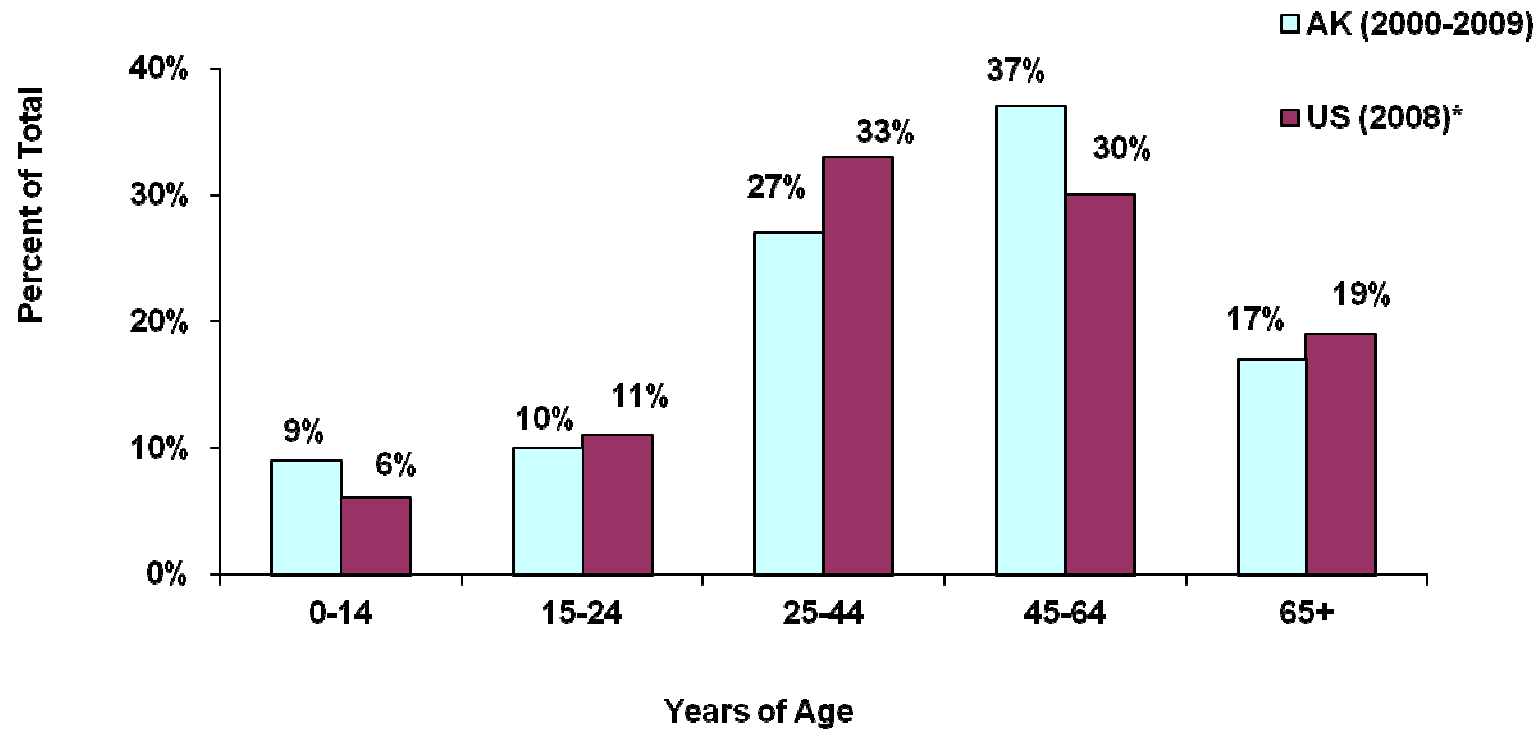
## Incidence of TB for Males and Females



Median age of persons with TB in Alaska

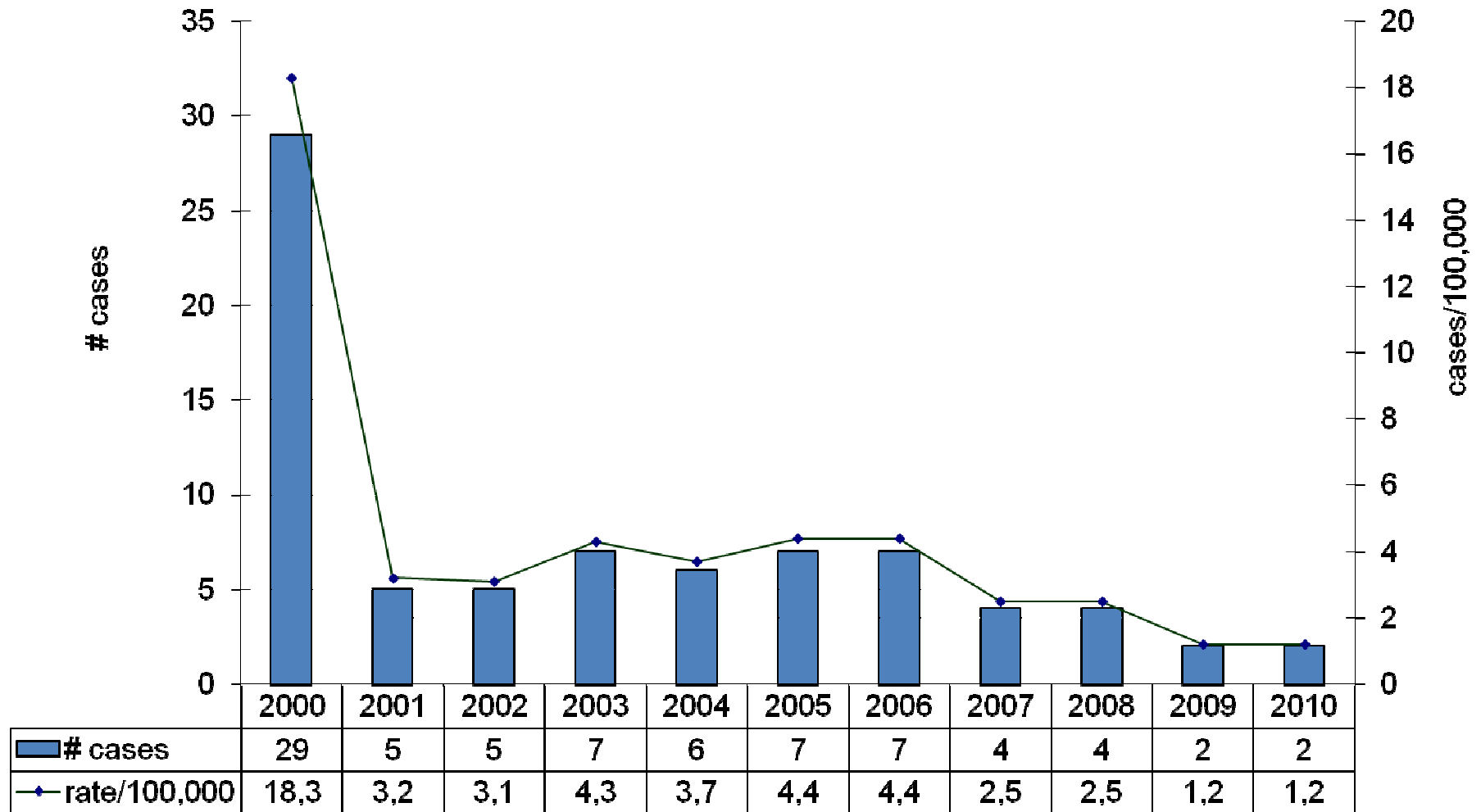


## Age of persons with TB: Alaska and U.S.

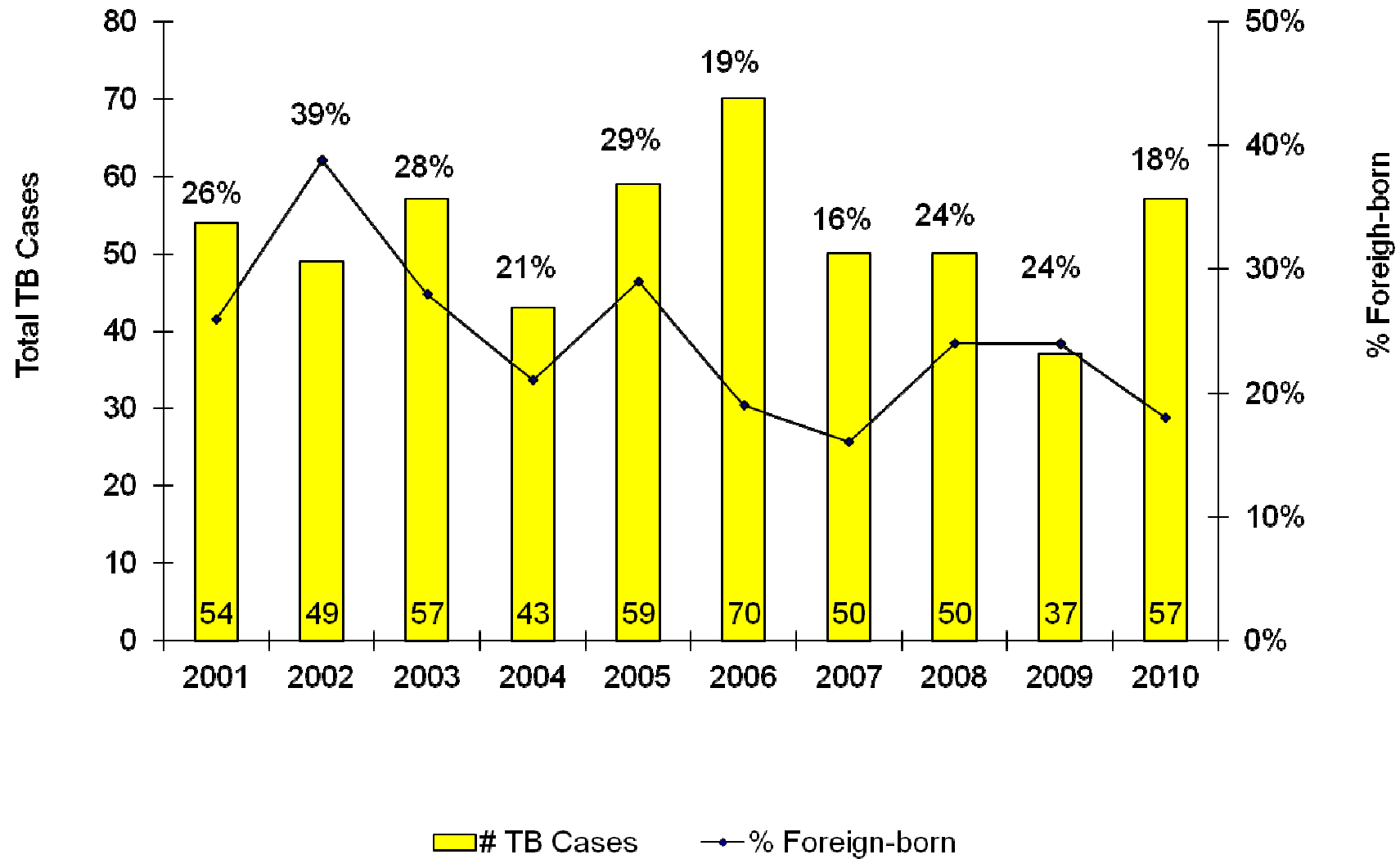


\*CDC. Reported Tuberculosis in the United States, 2008. Atlanta, GA: U.S. Department of Health and Human Services, CDC, September 2009.

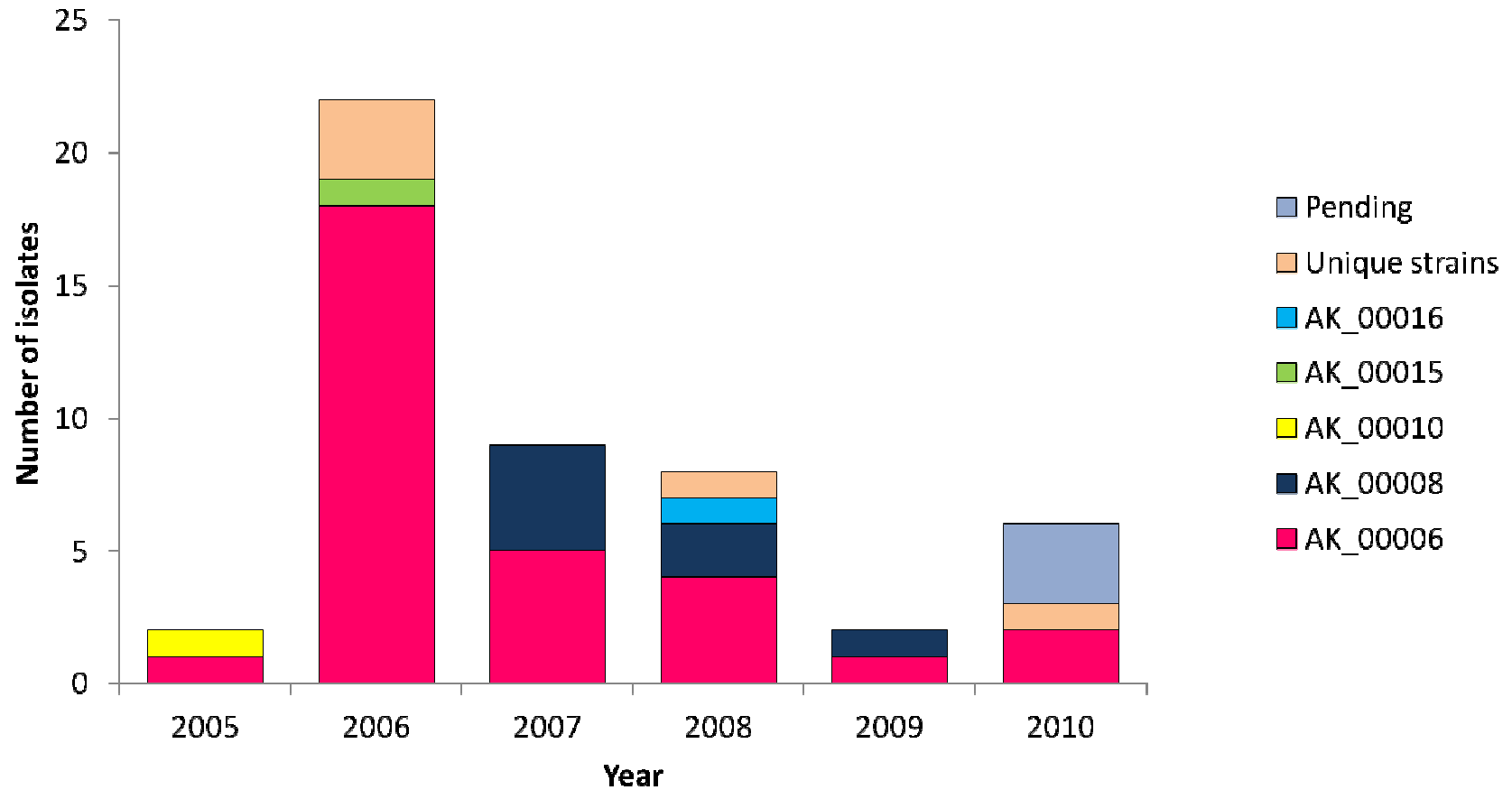
## Pediatric (< 15 years) TB in Alaska, 2000 - 2010



## Number of TB cases and the percent foreign-born: 2001-2010



### M. tuberculosis Genotype Clusters Identified in Anchorage Homeless Case-Patients: 2005 - 2010



# Recent Alaska Outbreaks

